

This right of way map when recorded is an instrument of conveyance, transferring in accordance with the Florida Statutes 337.29, all right, title, and interest in the road, street, or highway shown herein, from the Florida Department of Transportation to Martin County.

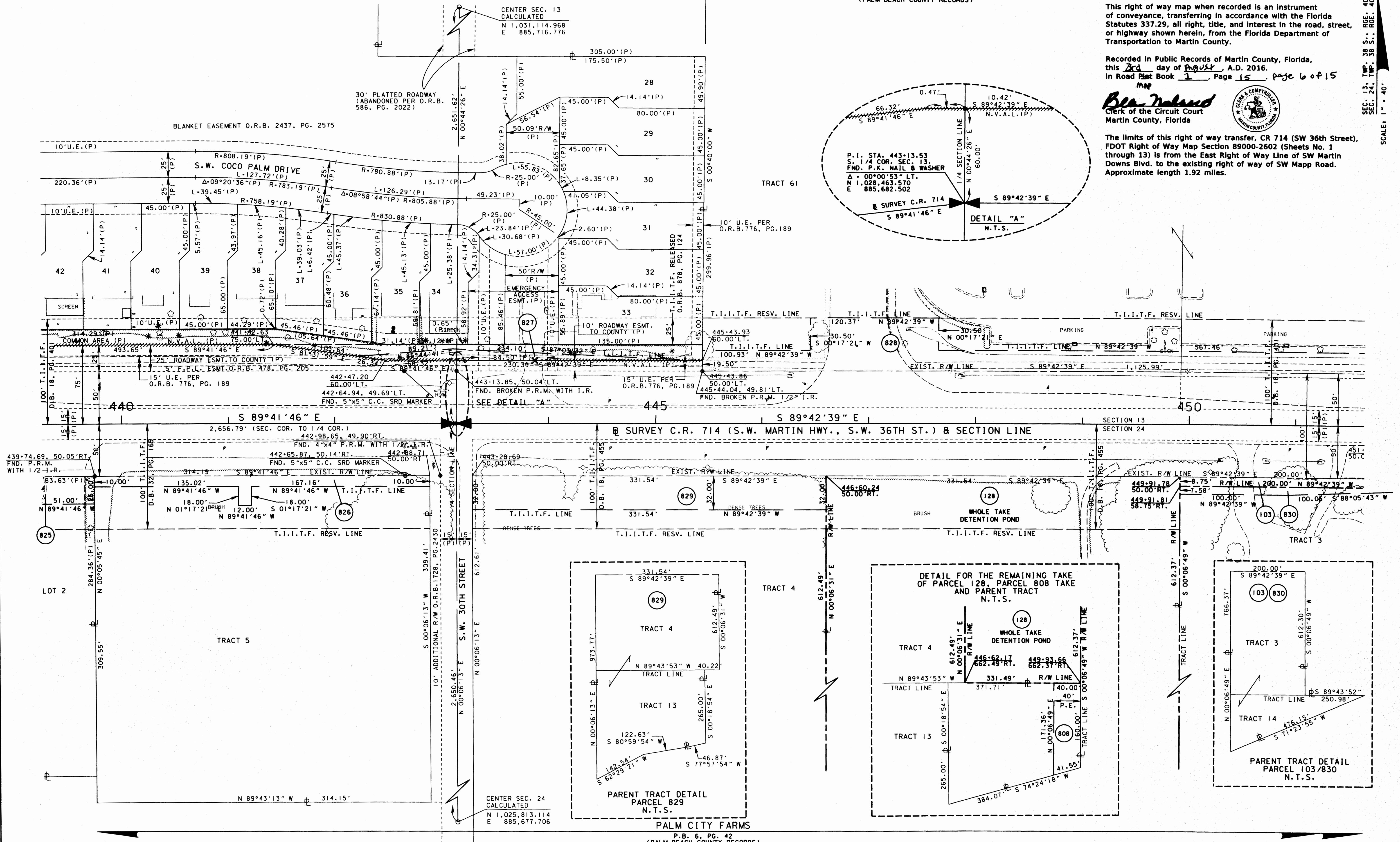
Recorded in Public Records of Martin County, Florida, this 23rd day of August, A.D. 2016, in Road Map Book 1, Page 15, page 6 of 15 MAP

Ben Ireland
Clerk of the Circuit Court
Martin County, Florida



The limits of this right of way transfer, CR 714 (SW 36th Street), FDOT Right of Way Map Section 89000-2602 (Sheets No. 1 through 13) is from the East Right of Way Line of SW Martin Downs Blvd. to the existing right of way of SW Mapp Road. Approximate length 1.92 miles.

SCALE: 1" = 40'
SEC. 13, TWP. 38 S., RGE. 40 E.
SEC. 24, TWP. 38 S., RGE. 40 E.



NOT A SURVEY
C.R. 714 (S.W. MARTIN HWY.) FROM THE FLORIDA TURNPIKE TO S.E. WILLOUGHBY BLVD.

RIGHT OF WAY MAP	FLORIDA DEPARTMENT OF TRANSPORTATION RIGHT OF WAY MAPPING	APPROVED BY	DATE	SEE SHEET ONE FOR LEGEND AND GENERAL NOTES				FED. PROJ. NO. SEE COVER SHEET	SECTION 89000-2602	MAPS PREPARED BY KEITH B SCHNARS, P.A.	FIELD BOOK NO. 'S SEE SHEET NO. 1
		DISTRICT RIGHT OF WAY SURVEYOR	2/23/09	REVISION	BY	DATE	CHECKED				

t:\ms\mapp\ing\2309781\wde#106.dgn